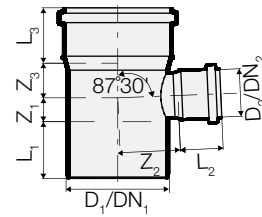


**GAMMA TRIPLUS**

**HTEA braga ridotta  
87°30'**

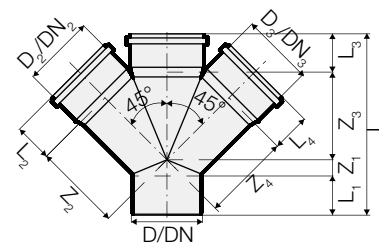


COD.	D <sub>1</sub> /D <sub>2</sub>	DN <sub>1</sub> /DN <sub>2</sub>	Z <sub>1</sub>	L <sub>1</sub>	Z <sub>2</sub>	L <sub>2</sub>	Z <sub>3</sub>	L <sub>3</sub>	kg				HxLxP	CL	€/pz
VS0650555	40/32	40/30	18	52	23	50	20	50	0,048	40	320	1280	1000x800x1200	TP02	4,67
VS0650561	50/40	50/40	23	50	29	44	24	46	0,099	25	200	800	1010x800x1200	TP02	5,57
VS0650567	75/40	70/40	22	53	47	44	30	52	0,191	25	100	300	853x800x1200	TP02	7,70
VS0650573	75/50	70/50	27	53	46	46	35	52	0,199	25	100	300	853x800x1200	TP02	7,70
VS0650579	90/40	90/40	23	56	50	44	29	56	0,264	15	60	240	860x800x1200	TP02	11,62
VS0650585	90/50	90/50	24	56	50	46	34	56	0,275	20	80	240	853x800x1200	TP02	11,62
VS0650591	110/40	100/40	21	61	62	44	32	59	0,350	20	80	240	1039x800x1200	TP02	13,00
VS0650597	110/50	100/50	26	61	64	46	37	59	0,374	20	80	240	1039x800x1200	TP02	13,00
VS0650603	110/75	100/70	38	61	67	52	49	59	0,445	15	60	120	940x800x1200	TP02	13,00
VS0650691 ♦	110/90	100/90	56	61	90	60	65	59	0,705	10	40	120	930x800x1200	TP02	14,66
VS0650609	125/50	125/50	28	66	68	46	36	65	0,719	10	40	120	853x800x1200	TP02	29,69
VS0650615	125/110	125/100	58	66	72	59	64	65	0,751	8	32	96	1039x800x1200	TP02	29,69
VS0650621	160/110	150/100	-	82	-	-	67	77	1,207	1	-	65	930x800x1200	TP02	46,79
VS0650627	160/125	150/125	-	82	-	-	75	77	1,427	1	-	65	930x800x1200	TP02	46,79
VS0650631 *	200/110	200/100	50	150	134	64	101	134	2,873	1	-	20	930x800x1200	TP02	151,69
VS0650635 *	200/125	200/125	57	150	135	75	99	134	2,764	1	-	18	930x800x1200	TP02	157,67
VS0650639 *	200/160	200/150	118	150	138	76	116	134	3,205	1	-	20	930x800x1200	TP02	163,61
VS0650645 *	250/110	250/100	70	180	145	64	77	162	4,632	1	-	10	930x800x1200	TP02	227,56
VS0650649 *	250/160	250/150	74	180	174	78	118	162	6,091	1	-	10	930x800x1200	TP02	249,88
VS0650651 *	250/200	250/200	95	180	160	135	138	162	6,150	1	-	8	930x800x1200	TP02	327,22

\* Pezzo saldato.

♦ Braga semplice con riduzione innestata sulla derivazione.

**HTDA braga doppia  
45°**



COD.	D <sub>1/2/3</sub>	DN <sub>1/2/3</sub>	L	Z <sub>1</sub>	L <sub>1</sub>	Z <sub>2/3/4</sub>	L <sub>2/3/4</sub>	kg				HxLxP	CL	€/pz
VS0650655	110/110/110	100/100/100	280	25	61	136	59	0,902	5	20	60	1010x800x1200	TP02	26,00